

Order Classification
 Family Corallimorpharia
 Genus Corallimorphidae
 Cited as Corynactis
 Species: *Pseudocorynactis caribbeorum*
 Corynactis caribbeorum (den Hartog, 1980)

Reference: [den Hartog JC, Ocaña O, Brito A. 1993. Corallimorpharia collected during the CANCAP expeditions \(1976-1986\) in the south-eastern part of the North Atlantic. Zoologische Verhandlungen 282. Tenerife \(RMNH Coel. 17759\)](#)

Tissue	Cnidae type	Range Length x Width (mean ± sd)	N	Abundance
Acrospheres of tentacles	Spirocysts	ca. 50-275 x 2.7-7.1	--	+++
	Homotrichs	92.4(67.6-105.0) x 5.7(4.9-6.2)	17	+
	Spirulae	39.0(35.6-43.6) x 4.7(4.5-4.9)	20	+
	Penicilli D	122.0(113-133.5) x 6.2(5.8-6.7)	14	+
	Penicilli E	166.4(155.8-182.5) x 16.5(15.1-182.5)	6	--
Stomodaeum	Homotrichs	31.5(29.4-35.6) x 4.9(4.5-5.5)	10	+?
	Penicilli D	66.5(58.7-71.2) x 21.1(18.7-24.0)	10	+?
Column	Spirulae I	9.1(8.0-9.8) x 3.7(3.3-4.0)	7	+ (inc)
	Spirulae II	21.6(18.7-24.0) x 6.3(5.8-7.1)	15	+
	Penicilli D	20.5(16.9-24.9) x 7.5(6.7-8.0)	11	+
	Penicilli E	34.0(30.3-37.4) x 11.2(8.9-13.4)	11	+
Mesenterial filaments	Spirulae	only one observed, 11.6 x 4.2	1	---
	Penicilli D	20.2(18.7-22.3) x 6.8(6.2-7.1)	10	-
	Penicilli E	75.8(62.3-89.0) x 29.1(21.4-35.6)	45	+

Reference: [den Hartog JC, Ocaña O, Brito A. 1993. Corallimorpharia collected during the CANCAP expeditions \(1976-1986\) in the south-eastern part of the North Atlantic. Zoologische Verhandlungen 282. Tenerife \(RMNH Coel. 17758\)](#)

Tissue	Cnidae type	Range Length x Width (mean ± sd)	N	Abundance
Acrospheres of tentacles	Spirocysts	ca. 75-275 x 2.7-7.6	--	+++
	Homotrichs	one 111 x 6.7; several collapsed	--	-?
	Spirulae	39.4(34.7-44.5) x 5.3(4.9-6.2)	10	--
	Penicilli D	131.8(111.3-138.0) x 6.2(5.8-6.7)	20	+
	Penicilli E	176.9(155.8-191.4) x 18.1(14.2-20.5)	20	+
Stomodaeum	Homotrichs	34.8(29.4-40.1) x 5.2(4.5-6.2)	17	+
	Penicilli D	75.2(66.8-87.2) x 22.2(17.8-24.0)	20	+
Column	Spirulae I	11.9(8.9-14.2) x 3.7(3.3-4.0)	20	-
	Spirulae II	25.2(21.4-30.3) x 6.1(5.3-6.4)	20	-
	Penicilli D	23.5(20.0-29.4) x 6.8(5.3-7.1)	20	-
	Penicilli E	37.6(31.2-42.7) x 10.7(8.9-11.6)	30	-
Mesenterial filaments	Spirulae	not observed	--	--
	Penicilli D	22.7(18.7-26.7) x 6.3(5.8-6.7)	35	+
	Penicilli E	83.3(65.0-93.5) x 31.0(21.4-40.0)	40	+

Reference: [den Hartog JC, Ocaña O, Brito A. 1993. Corallimorpharia collected during the CANCAP expeditions \(1976-1986\) in the south-eastern part of the North Atlantic. Zoologische Verhandlungen 282. La Palma \(RMNH Coel. 17757\)](#)

Tissue	Cnidae type	Range Length x Width (mean ± sd)	N	Abundance
Acrospheres of tentacles	Spirocysts	ca. 80-222.5 x 3.6-6.7	--	+++
	Homotrichs	ca. 93.5-102.4 x 5.8-6.2	4	-
	Spirulae	44.6(40.1-53.4) x 5.1(4.5-5.8)	25	+
	Penicilli D	129.3(117.5-142.4) x 6.6(6.2-7.1)	20	+
	Penicilli E	174.5(146.9-191.4) x 19.2(17.8-22.3)	20	+
Stomodaeum	Homotrichs	39.1(34.7-42.7) x 5.4(4.5-6.2)	20	++
	Penicilli D	75.7(72.1-80.1) x 288.8(27.6-30.3)	10	-/+
Column	Spirulae I	only one measured, 12 x 3.6		-?
	Spirulae II	24.8(23.1-26.7) x 6.4(5.8-7.6)	10	-
	Penicilli D	24.7(20.5-30.3) x 6.1(4.9-7.1)	10	-
	Penicilli E	37.2(32.0-40.1) x 11.5(9.8-12.5)	30	+
Mesenterial filaments	Spirulae	14.2(12.5-15.1) x 3.9(3.6-4.5)	10	-?
	Penicilli D	25.4(22.3-26.7) x 6.6(6.2-7.1)	20	+
	Penicilli E	86.5(82.8-90.8) x 39.2(33.8-42.7)	20	+

Notes: +++: very common; ++: common; +: rather common; -: uncommon; --: rare; ---: sporadic; ? : data insufficient to even suggest numbers because of the condition of the tissue concerned; inc.: inconspicuous.

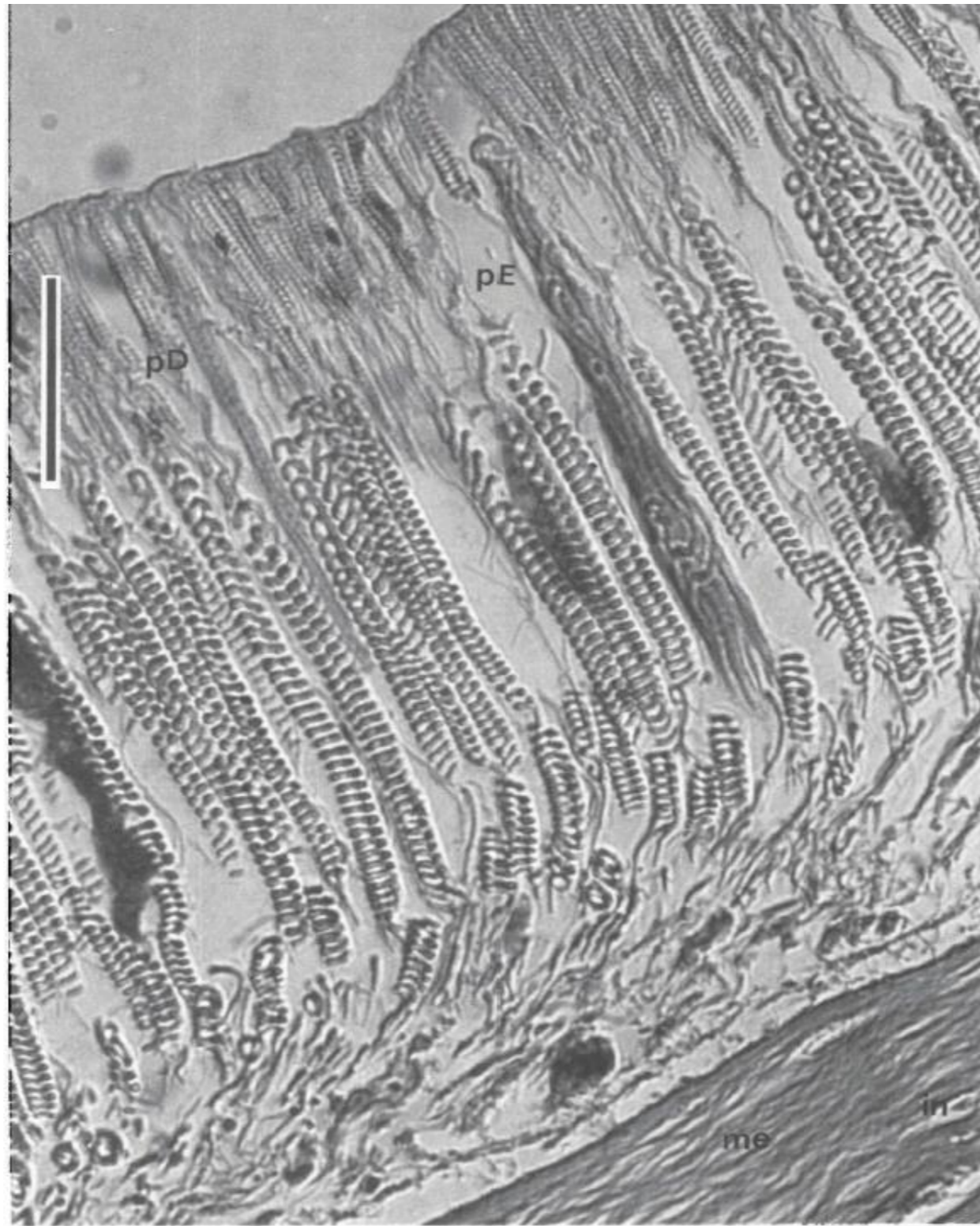


Fig. 37. *Pseudocorynactis caribbeorum*. Specimen from Canary Islands (RMNH Coel. 18619), cross-section through tentacular acrosphere; note numerous spirocysts arranged in two layers. Although the photo may suggest that the layer of small spirocysts lies on top of the layer of large spirocysts, this is an illusion: the tips of both categories reach unto the ectodermal surface. This illusion is mainly due to the fact that the proximal portion of the large spirocysts tapers, whereas the tube in this part is not coiled (cf. den Hartog, 1980: pl. 2a), and therefore less refractile and less conspicuous than the densely coiled central portion. The small spirocysts largely occupy the spaces between the tapering ends of the large spirocysts. Symbols: pD = penicillus D; pE = penicillus E; in = undifferentiated inclusive cells; me = mesogloea. Scale bar 40 μ m.

Source: den Hartog et al. (1993)