

Order Corallimorpharia
 Family Corallimorphidae
 Genus Corallimorphus
 Species *Corallimorphus rigidus* Moseley, 1877

Reference: [Den Hartog, J. C., Ocaña, O. and Brito, A. Corallimorpharia collected during the CANCAP expeditions \(1976-1986\) in the south-eastern part of the North Atlantic. Nationaal Natuurhistorisch Museum. 1993. \(RMNH Coel. 17756\)](#)

Tissue	Cnidae type	Range Length x Width (mean ± sd)	N	Abundance
Tentacular tissue	spirocysts	41.8(35.6-49.0) x 5.2(4.0-5.8)	55	+
	?homotrichs	76.5 x 10.2	1	?
	spirulae 1	21.9(16.9-26.7) x 5.7(4.5-6.7)	65	+
	spirulae 2	57.0(53.4-62.3) x 3.6(3.6-3.8)	4	?
	penicilli D 1	38.8(30.3-47.2) x 9.0(6.7-10.7)	50	+/-
	penicilli D 2	59.7(49.8-69.4) x 18.7 (16.0-21.8)	45	-
	penicilli D 3	133.5 x 7.1		?
	penicilli E	64.4(56.1-71.2) x 15.1(12.5-16.9)	16	(cont?)
Oral disc	penicilli D 1	38.7(30.3-44.5) x 8.7(7.6-9.8)	16	+
	penicilli D 2	62.0(53.4-70.3) x 17.8(15.1-21.4)	20	+
Pedal disc	spirulae	14.6(9.8-19.6) x 5.1(4.5-6.2)	18	?(inc)
	penicilli D 1	37.9(30.3-46.3) x 9.0(7.6-10.2)	20	+
	penicilli D 2	60.3(49.0-69.4) x 19.7(15.1-21.4)	20	+
Column	spirulae	ca. 19 x 5.3-5.8	2	?
	penicilli D 1	35.2(28.5-40.9) x 8.1(7.1-8.9)	15	+
	penicilli D 2	ca.53-67 x 17-20		-?
Stomodaeum	homotrichs	68.7(53.4-76.5) x 12.6(10.7-15.1)	30	++
	spirulae	ca. 18-20 x 3.6-4.5	3	---
Filaments	spirulae	20.3(17.8-24.0) x 5.6(4.5-6.2)	20	+
	penicilli D	74.8(57.8-82.8) x 9.2(8.0-10.7)	30	+
	penicilli E	98.0(78.0-109.5) x 22.1(18.7-25.8)	40	+

Notes:

: +++ = very common, ++ = common, + = rather common, - = uncommon, -- = rare, = sporadic; +/++ = rather common to common; -/+ = uncommon to rather common, etc.; ? = data insufficient to even suggest numbers because of the condition of the tissue concerned; inc. = inconspicuous; cont? = contamination?

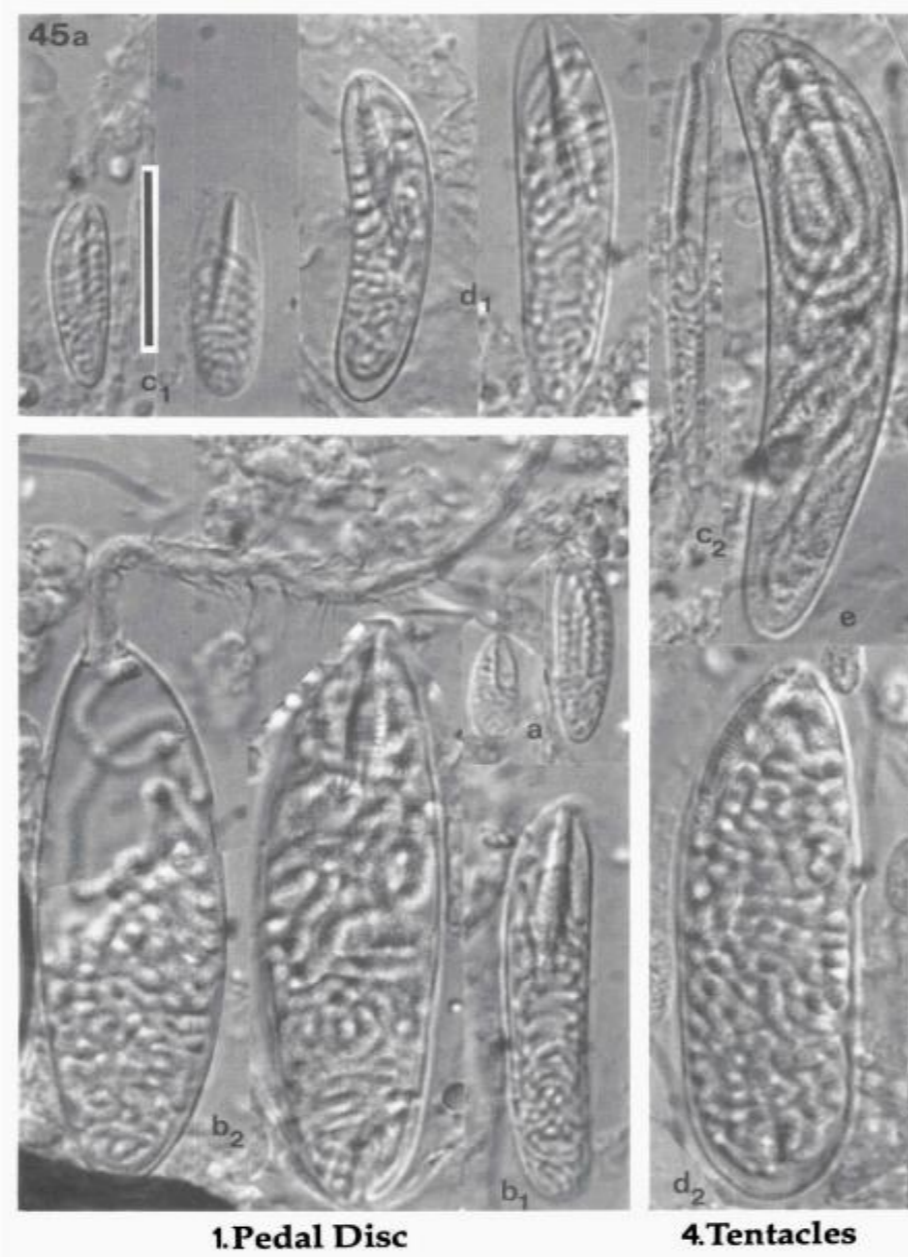




Fig. 45a-b. *Corallimorphus cf. atlanticus*. CANCAP specimen (RMNH Coel. 17756), pictorial survey of the cnidom [incomplete]. Numerals and characters correspond with those used in table 6. Scale bar 20 μ m.
 1. Pedal disc: a. Spirulae; b₁, 2. Penicilli D. 2/3 Column and Oral disc: cnidae not figured, similar to those of pedal disc. 4. Tentacles: c₁, 2. Spirulae; d₁, 2. Penicilli D; e. Penicillus E. 5. Stomodaeum: a. Homotrachs. 6. Filaments: b. Penicilli D; c. Penicillus E.

Source: Hartog, Ocaña and Brito (1993)

Reference:

[Den Hartog, J. C., Ocaña, O. and Brito, A. Corallimorpharia collected during the CANCAP expeditions \(1976-1986\) in the south-eastern part of the North Atlantic. Nationaal Natuurhistorisch Museum. 1993. Holotype B \(Bergens Museum 39195\)](#)

Tissue	Cnidae type	Range Length x Width (mean \pm sd)	N	Abundance
Tentacular tissue	spirulae 1	22.0(18.7-26.7) x 5.6(4.5-6.7)	65	+
	spirulae 2	63 x 4.1	1	?
	penicilli D 1	28.5(23.1-34.7) x 7.6(7.1-8.5)	16	-
Pedal disc	spirulae	13.7(11.3-17.1) x 4.3(4.1-5.0)	10	-
	penicilli D 1	36.7(28.8-45.0) x 9.1(7.2-10.8)	45	+
	penicilli D 2	66.2(54.0-76.5) x 19.1(15.3-21.6)	23	+
Column	spirulae	ca. 12-17 x 4.0-5.5	2	?
	penicilli D 1	34.9(30.6-40.5) x 8.5(7.2-9.9)	25	+
Stomodaeum	homotrachs	68.8(63.0-76.5) x 12.6(10.7-15.1)	30	++
	spirulae	18.7 x 4.5	1	---
Filaments	spirulae	22.3(18.9-27.0) x 5.1(4.5-5.9)	22	+?
	penicilli D	69.8(54.0-82.8) x 8.6(7.7-9.9)	28	+
	penicilli E	102.6(95.4-109.8) x 20.5(13.5-24.3)	23	+

Notes: +++ = very common, ++ = common, += rather common, - = uncommon, -- = rare, = sporadic; +/++ = rather common to common; -/+ = uncommon to rather common, etc.; ? = data insufficient to even suggest numbers because of the condition of the tissue concerned; inc. = inconspicuous; cont? = contamination?

No images available