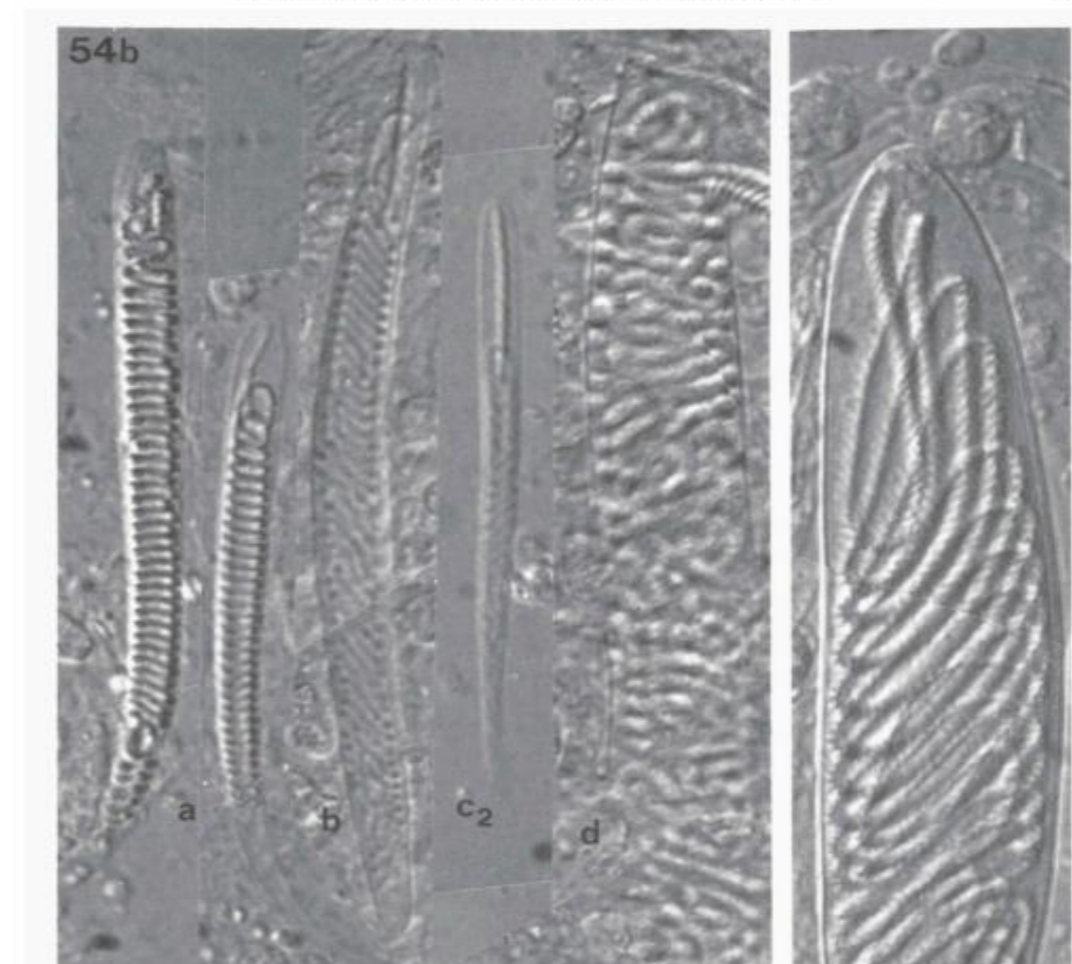
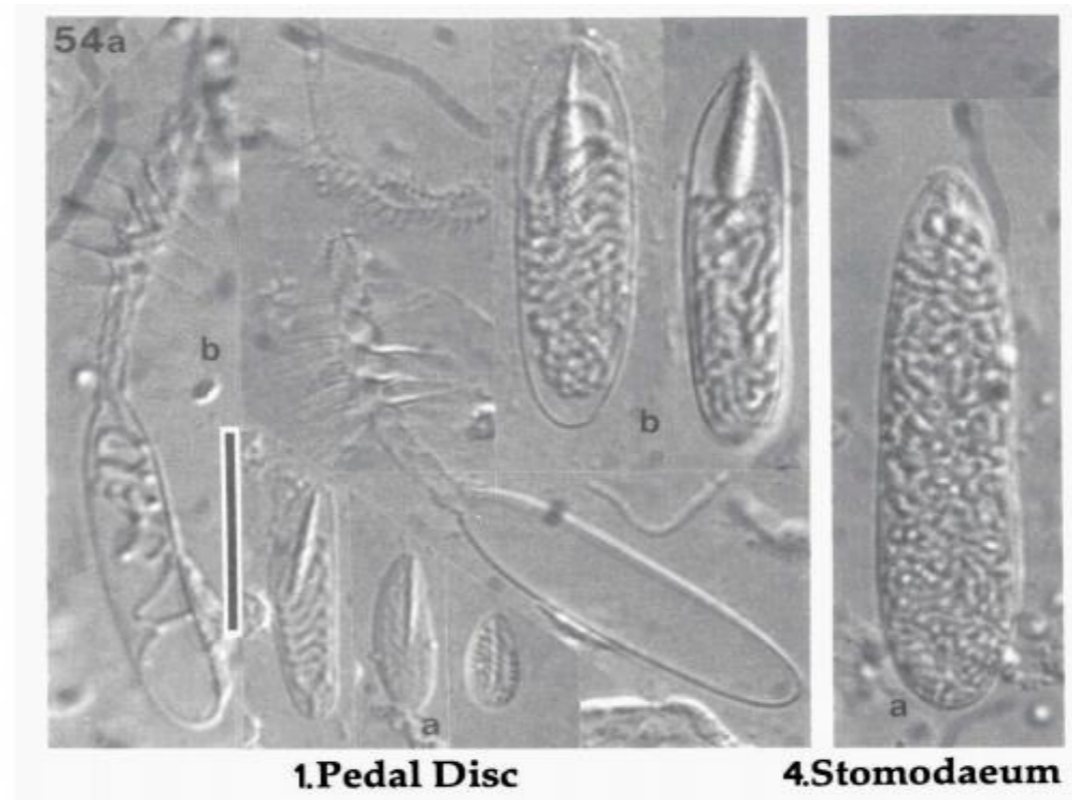


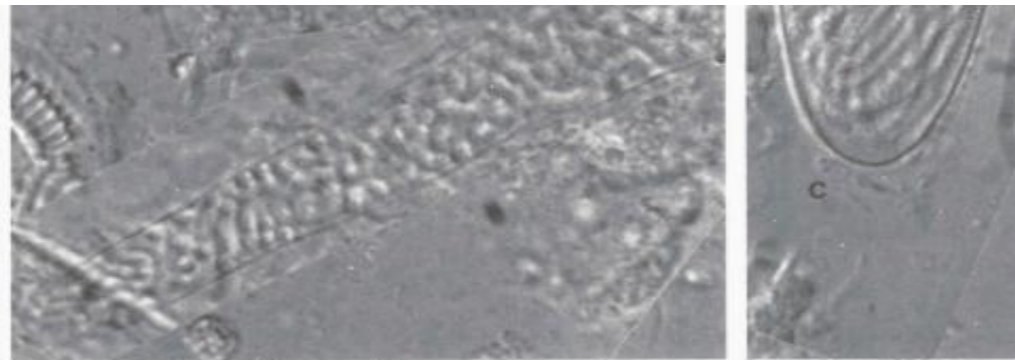
Order Classification  
 Family Corallimorpharia  
 Genus Corallimorphidae  
 Species Corallimorphus  
***Corallimorphus ingens*** Gravier, 1918

Reference: [den Hartog JC, Ocaña O, Brito A. 1993. Corallimorpharia collected during the CANCAP expeditions \(1976-1986\) in the south-eastern part of the North Atlantic. Zoologische Verhandlungen 282. Canary Islands \(RMNH Coel. 17754\)](#)

| Tissue                   | Cnidae type | Range Length x Width (mean ± sd)                                     | N        | Abundance |
|--------------------------|-------------|--|----------|-----------|
| Acrospheres of tentacles | spirocysts  | ca. 37-59 x 3.3-4.5  |          | ?         |
|                          | spirulae    |  |          |           |
|                          |             | 1 19.6-24.9(22.2) x 4.5-5.3(4.8)<br>2 48.9-71.2(63.4) x 3.6-4.5(3.7) | 10<br>15 | --<br>+   |
| Pedal disc               | spirulae    | 8.9-23.1 (14.9) x 4.0-5.3 (4.5)                                      | 17       | -?        |
|                          | penicilli D | 26.7-35.6 (31.5) x 6.7-8.9 (8.1)<br>[1 capsule 18.7 x 6.3]           | 20       | +         |
| Column                   | spirulae    | [14.3 x 4.9, 17.8 x 4.2]   | 2        | -         |
|                          | penicilli D | 20.5-27.6(23.3) x 6.2-8.5(7.2)                                       | 20       | +/-       |
| Stomodaeum               | homotrachs  | 51.6-67.6(59.9) x 10.7-13.4(11.9)                                    | 20       | ++        |
| Filaments                | spirulae    | 16.0-19.6(18.5) x 4.0-4.9(4.4)                                       | 5        | --        |
|                          | penicilli D | 44.5-61.4(51.4) x 7.6-9.8(8.9)                                       | 25       | --        |
|                          | penicilli E | 82.8-96.1(89.4) x 16.0-22.3 (19.9)                                   | 20       | +         |

Notes: ++: common, +: rather common, -: uncommon, --: rare, ?: data insufficient to even suggest numbers because of the condition of the tissue concerned





**3.Acrospheres**

**5.Filaments**

Fig. 54a-b. *Corallimorphus ingens*. Pictorial survey of the cnidom (incomplete). Numerals and characters correspond with those used in table 8. Scale bar 20  $\mu$ m.

**1. Pedal disc:** a. Spirulae; b. Penicilli D. **2. Column:** cnidae not figured. **3. Acrospheres:** a. Spirocysts; b. Homotrich?; c<sub>2</sub>. Spirula; d. Penicillus E. **4. Stomodaeum:** a. Homotrich. **5. Filaments:** c. Penicillus E.

Source: den Hartog, Ocaña and Brito (1993)