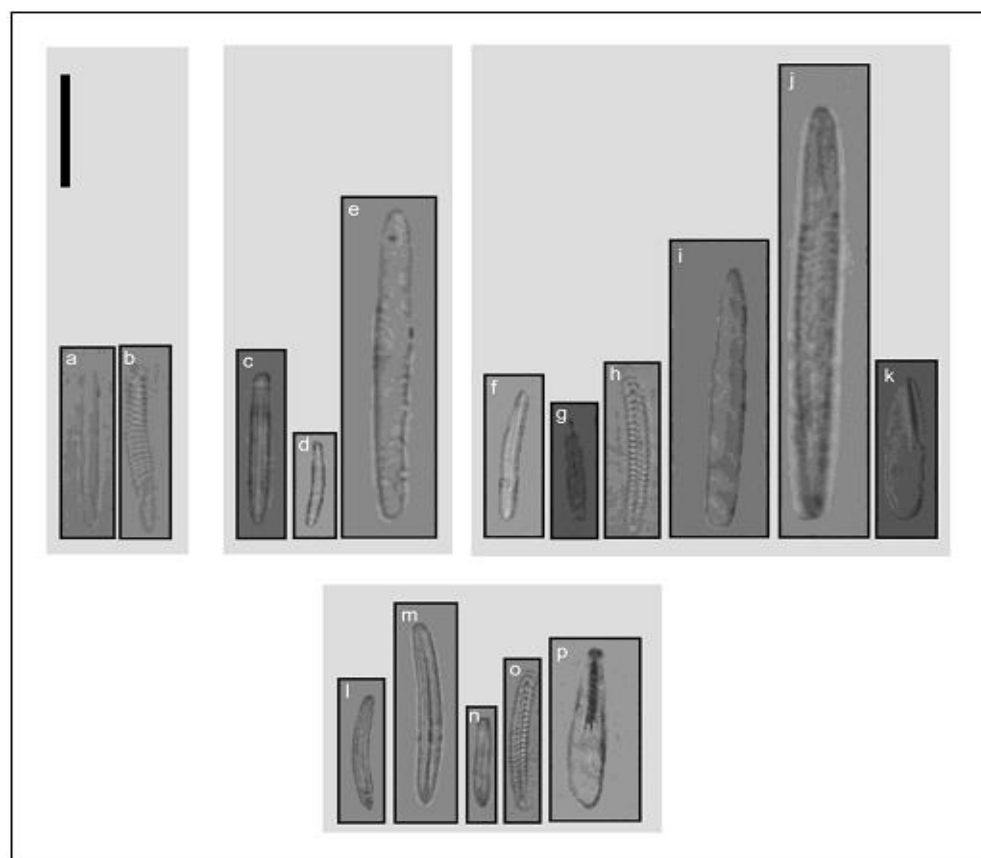


Order Actiniaria  
 Family Actiniidae  
 Genus Aulactinia  
 Species ***Aulactinia marplatensis*** (Zamponi,1977)

Reference: [Garese A, Carrizo S, Acuña FH. 2016. Biometry of sea anemone and corallimorpharian cnidae: statical distribution and suitable tools for analysis. Zoomorphology. DOI 10.1007/s00435-016-0319-6](#)

Tissue	Cnida type	Range Length x Width (mean ± sd)	n	N
Tentacles	Spirocyst	16–26 (21.16 ± 2.04) x 2–4 (2.91)	12/12	360
	Basitrich	16–26 (20.61 ± 0.52) x 2–4 (2.58)	12/12	360
Acrorahgi	Basitrich	10–25 (15.55 ± 2.77) x 2–3 (2.22)	12/12	360
	Spirocyst	17–42 (29.38 ± 4.71) x 2–4 (3.05)	12/12	360
	Holotrich	33–63 (46.56 ± 5.85) x 4–6 (4.76)	12/12	360
Column	Basitrich I	12–23 (18.71 ± 1.63) x 2–3 (2.44)	12/12	360
	Basitrich II	7–15 (9.68 ± 1.54) x 2	12/12	360
	Holotrich	23–61 (34.50 ± 7.55) x 2–5 (3.38)	12/12	360
Actinopharinx	Basitrich I	10–24 (17.84 ± 2.17) x 2–5 (2.34)	12/12	360
	Basitrich II	21–34 (26.34 ± 2.02) x 3–5 (3.51)	12/12	360
	Basitrich III	7–14 (10.85 ± 1.16) x 2–3 (2.01)	12/12	360
	Spirocyst	14–34 (20.29 ± 3.37) x 2–4 (2.83)	12/12	315
	Microbasic amastigophore	16–33 (23.40 ± 3.35) x 4–9 (5.56)	12/12	360
Mesenterial filaments	Basitrich I	14–24 (18.36 ± 1.91) x 2–4 (2.38)	12/12	360
	Basitrich II	9–14 (11.45 ± 0.93) x 2–3 (2.01)	12/12	360
	Spirocyst	17–23 (20.36 ± 1.74) x 2–3 (2.91)	4/12	11
	Microbasic b-mastigophore	23–40 (32.82 ± 3.14) x 3–7 (4.76)	12/12	360
	Holotrich	31–57 (44.78 ± 6.93) x 3–4 (3.47)	5/12	19
	Microbasic p-mastigophore	17–38 (22.82 ± 3.57) x 4–9 (5.55)	12/12	360



**Fig. 16** Cnidom of *Aulactinia marplatensis*. Tentacle: **a** basitrich, **b** spirocyst; Column: **c** basitrich I, **d** basitrich II, **e** holotrich; Mesenterial filaments: **f** basitrich I, **g** basitrich II, **h** spirocyst, **i** microbasic b-mastigophore, **j** holotrich, **k** microbasic p-mastigophore; Actinopharynx: **l** basitrich I, **m** basitrich II, **n** basitrich III, **o** spirocyst, **p** microbasic amastigophore. Scale= 10 μm

Source: Garese et al. (2016)

Reference: [Acuña FH, Excoffon AC, McKinstry SR, Martinez DE. 2007. Characterization of Aulactinia \(Actiniaria: Actiniidae\) species from Mar del Plata \(Argentina\) using morphological and molecular data. Hydrobiologia. DOI 10.1007/s10750-007-0749-8. \(Punta Cantera\)](#)

Tissue	Cnida type	Range Length x Width (mean ± sd)	n	N
Tentacles	Basitrichs	15.0–22.0 x 2.0–3.0	4/4	40
	Spirocysts	14.0–25.0 x 2.0–3.0	4/4	40
	Holotrichs	35.0–58.0 x 2.5–4.0	2/4	14
Column	Basitrichs I	16.0–21.0 x 1.5–2.5	4/4	40

	Basitrichs II	5.0–14.0 x 1.0–2.0	4/4	40
	Holotrichs	24.0–40.0 x 2.8–5.0	4/4	40
	Spirocysts	12.0–23.0 x 2.2–3.0	2/4	4
Actinopharinx	Basitrichs I	23.0–40.0 x 3.0–6.0	4/4	40
	Basitrichs II	11.0–21.0 x 1.0–2.5	4/4	36
	Microbasic p- mastigophores	18.0–31.0 x 4.0–8.0	3/4	16
	Holotrichs	31.0–42.0 x 3.0–3.5	2/4	8
Mesenterial filaments	Microbasic b-mastigophores	27.0–42.0 x 3.0–6.0	4/4	37
	Basitrichs	9.0–25.0 x 1.5–2.5	4/4	33
	Microbasic p-mastigophores	19.0–33.0 x 4.0–7.0	4/4	33
	Holotrichs	(56.0,57.0 x 3.0,3.5)	1/4	2

Reference: [Acuña FH, Excoffon AC, McKinstry SR, Martinez DE. 2007. Characterization of Aulactinia \(Actiniaria: Actiniidae\) species from Mar del Plata \(Argentina\) using morphological and molecular data. Hydrobiologia. DOI 10.1007/s10750-007-0749-8. \(Santa Clara del Mar\)](#)

Tissue	Cnida type	Range Length x Width (mean ± sd)	n	N
Tentacles	Basitrichs	18.0–25.0 x 2.0–3.0	4/4	40
	Spirocysts	14.0–24.0 x 2.0–3.0	4/4	40
	Holotrichs	(41.0,60.0 x 3.0,4.0)	2/4	2
Column	Basitrichs I	18.0–23.0 x 1.8–2.5	4/4	40
	Basitrichs II	5.0–11.0 x 1.2–2.0	4/4	40
	Holotrichs	26.0–47.0 x 2.0–4.0	4/4	40
	Spirocysts	-	-	-
Actinopharinx	Basitrichs I	21.0–31.0 x 3.0–4.0	4/4	40
	Basitrichs II	10.0–19.0 x 1.5–2.0	4/4	25
	Microbasic p- mastigophores	19.0–30.0 x 4.0–8.9	4/4	15
	Holotrichs	-	-	-
Mesenterial filaments	Microbasic b-mastigophores	30.0–42.0 x 3.5–6.0	4/4	37
	Basitrichs	9.0–22.0 x 1.5–3.0	4/4	37
	Microbasic p-mastigophores	21.0–31.0 x 4.5–8.0	4/4	23
	Holotrichs	35.0–53.0 x 3.5–4.0	2/4	11

Order Classification  
 Actiniaria  
 Family Actiniidae  
 Genus Aulactinia  
 Cited as ***Aulactinia reynaudi***  
 Species ***Aulactinia marplatensis*** (Zamponi,1977)

Reference: [Acuña FH, Excoffon AC, McKinstry SR, Martinez DE. 2007. Characterization of Aulactinia \(Actiniaria: Actiniidae\) species from Mar del Plata \(Argentina\) using morphological and molecular data. Hydrobiologia. DOI 10.1007/s10750-007-0749-8. \(Punta Cantera\)](#)

Tissue	Cnida type	Range Length x Width (mean ± sd)	n	N
Tentacles	Basitrichs	19.0–24.0 x 1.8–3.0	4/4	40
	Spirocysts	16.0–25.0 x 2.0–3.0	4/4	40
	Holotrichs	-	-	-
Column	Basitrichs I	14.0–22.0 x 2.0–2.5	4/4	40
	Basitrichs II	6.0–11.0 x 1.5–2.0	4/4	24
	Holotrichs	32.0–55.0 x 2.5–3.7	4/4	40
	Spirocysts	12.0–23.0 x 2.0–2.5	4/4	11
Actinopharinx	Basitrichs I	25.0–31.0 x 2.5–4.0	4/4	40
	Basitrichs II	9.0–25.0 x 1.5–3.0	4/4	33
	Microbasic p- mastigophores	19.0–34.0 x 4.0–7.0	4/4	22
	Holotrichs	45.0–54.0 x 3.0–4.0	3/4	5
Mesenterial filaments	Microbasic b-mastigophores	31.0–45.0 x 4.0–6.0	4/4	39
	Basitrichs	8.0–23.0 x 1.5–2.0	4/4	39
	Microbasic p-mastigophores	16.0–35.0 x 4.5–8.0	4/4	29
	Holotrichs	(51.0-53.0 x 3.0-4.0)	2/4	2

Reference: [Acuña FH, Excoffon AC, McKinstry SR, Martinez DE. 2007. Characterization of Aulactinia \(Actiniaria: Actiniidae\) species from Mar del Plata \(Argentina\) using morphological and molecular data. Hydrobiologia. DOI 10.1007/s10750-007-0749-8. \(Santa Clara del Mar\)](#)

Tissue	Cnida type	Range Length x Width (mean ± sd)	n	N
Tentacles	Basitrichs	19.0–25.0 x 2.0–3.0	4/4	40
	Spirocysts	16.0–25.0 x 1.5–3.0	4/4	38
	Holotrichs	(48.0 x 4.0)	1/4	1
Column	Basitrichs I	17.0–24.0 x 1.5–2.5	4/4	40
	Basitrichs II	7.0–11.0 x 1.5–2.5	4/4	38

	Holotrichs	31.0–59.0 x 3.0–4.0	4/4	40
	Spirocysts	(18.0 x 2.5)	1/4	1
Actinopharinx	Basitrichs I	17.0–29.0 x 2.0–4.0	4/4	40
	Basitrichs II	9.0–18.0 x 1.5–2.0	4/4	32
	Microbasic p- mastigophores	20.0–32.0 x 4.0–8.0	4/4	22
	Holotrichs	-	-	-
Mesenterial filaments	Microbasic b-mastigophores	36.0–43.0 x 4.0–6.0	4/4	39
	Basitrichs	11.0–25.0 x 1.5–3.0	4/4	40
	Microbasic p-mastigophores	18.0–31.0 x 3.5–8.0	4/4	29
	Holotrichs	42.0–56.0 x 3.0–3.5	2/4	6

---